

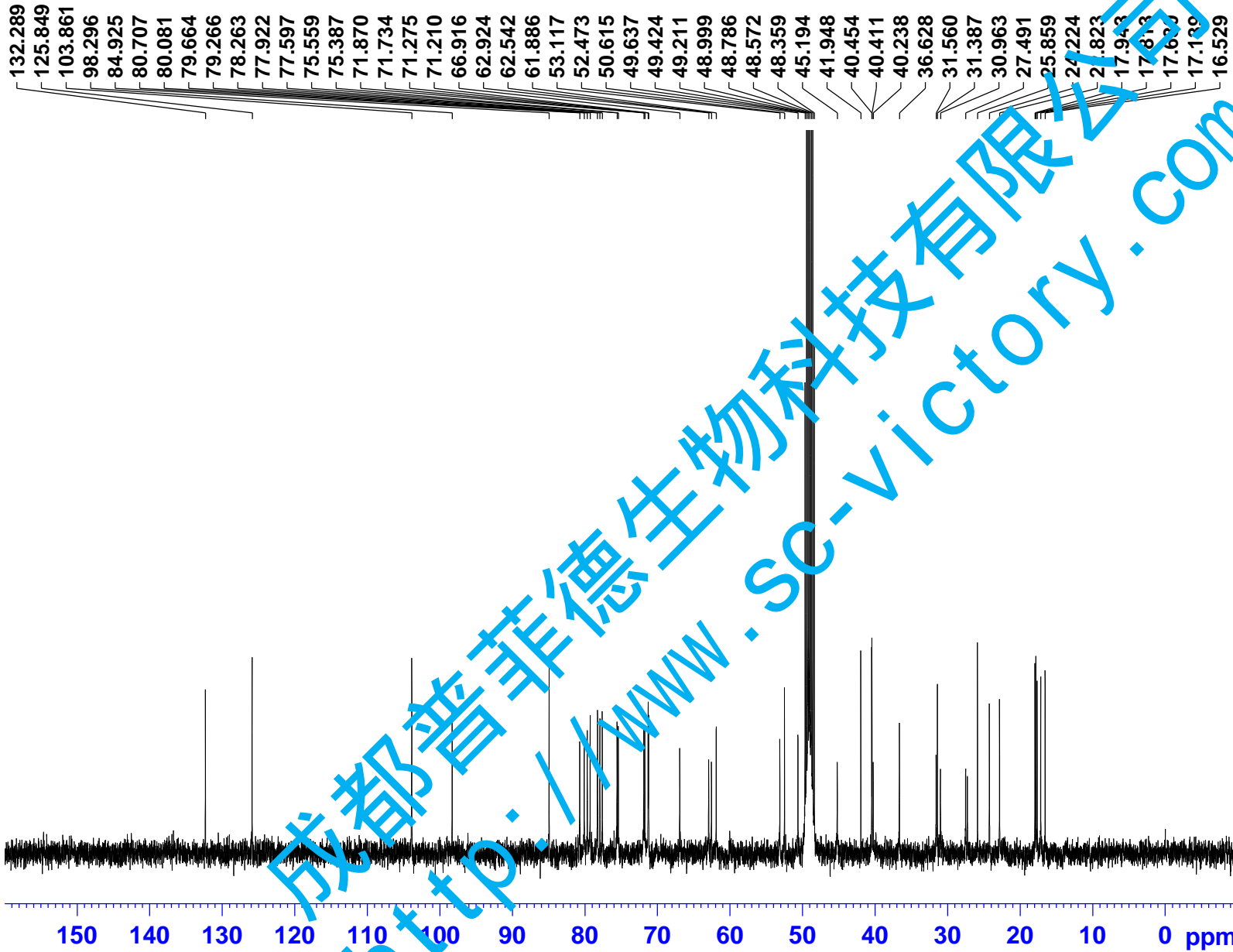
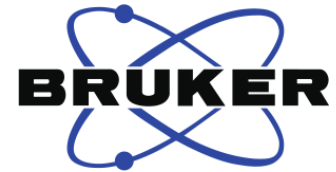
Current Data Parameters  
NAME R1  
EXPNO 1  
PROCNO 1

F2 - Acquisition Parameters  
INSTRUM spect  
PROBHD 5 mm PABBO BB-  
PULPROG zg30  
TD 65536  
SOLVENT MeOD  
NS 16  
DS 2  
SWH 8223.685 Hz  
FIDRES 0.125483 Hz  
AQ 3.9846387 sec  
RG 52.45  
DW 60.800 usec  
DE 6.50 usec  
TE 299.8 K  
D1 1.0000000 sec  
TD0 1

==== CHANNEL f1 =====  
NUC1 1H  
P1 9.23 usec  
PLW1 20.0000000 W  
SFO1 400.1324710 MHz

F2 - Processing parameters  
SI 65536  
SF 400.1299958 MHz  
WDW EM  
SSB 0  
LB 0.30 Hz  
GB 0  
PC 1.00

成都普菲德生物技术有限公司  
www.sc-victory.com



132.289  
125.849  
103.861  
98.296  
84.925  
80.707  
80.081  
79.664  
79.266  
78.263  
77.922  
77.597  
75.559  
75.387  
71.870  
71.734  
71.275  
71.210  
66.916  
62.924  
62.542  
61.886  
53.117  
52.473  
50.615  
49.637  
49.424  
49.211  
48.999  
48.786  
48.572  
48.359  
45.194  
41.948  
40.454  
40.411  
40.238  
36.628  
31.560  
31.387  
30.963  
27.491  
25.859  
24.224  
21.823  
17.943  
17.813  
17.633  
17.139  
16.529

Current Data Parameters  
NAME R1  
EXPNO 2  
PROCNO 1

F2 - Acquisition Parameters

INSTRUM spect  
PROBHD 5 mm PABBO BB-  
PULPROG zgpg30  
TD 65536  
SOLVENT MeOD  
NS 1024  
DS 4  
SWH 24038.461 Hz  
FIDRES 0.366798 Hz  
AQ 1.3631988 sec  
RG 194.85  
DW 20.800 usec  
DE 6.50 usec  
TE 300.5 K  
D1 2.0000000 sec  
D11 0.03000000 sec  
TD0 1

==== CHANNEL f1 =====  
NUC1 13C  
P1 9.24 usec  
PLW1 95.0000000 W  
SFO1 100.6228293 MHz

==== CHANNEL f2 =====  
CPDPRG2 waltz16  
NUC2 1H  
PCPD2 80.00 usec  
PLW2 19.0000000 W  
PLW12 0.2529200 W  
PLW13 0.1618700 W  
SFO2 400.1316005 MHz

F2 - Processing parameters  
SI 32768  
SF 100.6126288 MHz  
WDW EM  
SSB 0  
LB 1.00 Hz  
GB 0  
PC 1.40